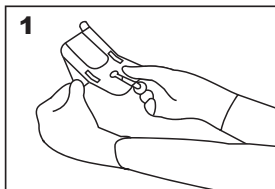


# ULTRA DRAPE® II

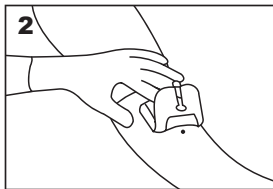
UGPIV Barrier and Securement

## Application Instructions

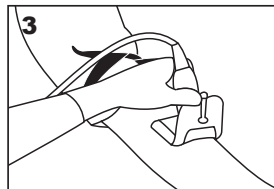
STERILE R



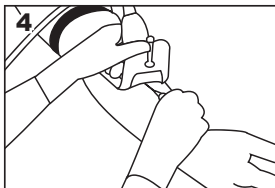
Scan with ultrasound to select optimal vein, mark vessel site on skin. Perform skin antisepsis consistent with facility's protocol. Remove Tab #1 ① and fold UltraDrape in half.



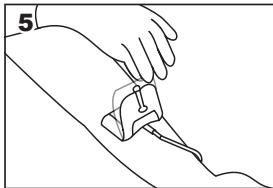
With UltraDrape dressing folded in half and adhesive side facing toward patient, position fold on skin mark. Firmly press adhesive side upward onto patient skin. The half of dressing with split will stand upright, creating barrier between ultrasound transducer and insertion site. The upright barrier protects transducer/gel from insertion site, providing an aseptic insertion area.



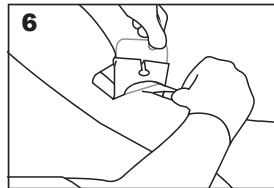
Confirm Tab #3 ③ ↑ is pointing upright and facing the inserter. Apply ultrasound gel onto top layer of film behind the upright barrier. Position ultrasound transducer on gel to reacquire target vessel. The transducer will not come in contact with skin or insertion site.



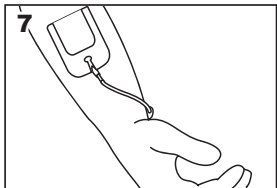
Follow facility's protocol for ultrasound guided IV catheter needle insertion.



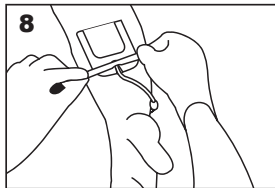
After successful insertion, and once scanning is complete, grasp side tab labeled #2, pull UP ② ↑ to remove top layer of film with gel. Discard film.



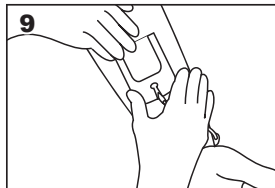
Lift Tab #3 UP ③ ↑ and pull dressing down over catheter. While removing Tab #3 stabilize catheter and back side of dressing as needed.



7 Press dressing over catheter and tubing, using split section to wrap around tubing. Adhere dressing to skin.



8 Use adhesive strips for additional securement of tubing section and hub of catheter.



9 To remove the dressing, gently loosen the top edge. Place fingers on top of dressing to stabilize skin or catheter. Remove dressing “low and slow” while stretching the dressing parallel to skin.



LABORATORIES, INC.  
286 Eldridge Road  
Fairfield, NJ 07004, U.S.A.



Parker Laboratories BV  
Bedrijvenpark Twente 305  
7602 KL Almelo  
The Netherlands

